

Start your plan.

Taking a holistic look at your entire farm plan, assessing the size of your plantation and identifying the best location for trees to be planted will be key into making a successful plan.



Tree planting should form part of the whole farm plan

Think about the purpose of the trees you are going to plant.

Will they be providing shelter for crops and cattle?

Are they for future pulp and saw logs?

Are they being planted on a slope?



Plan checklist

Here's a checklist of things to assess on your property when planning:

- Check soil type and depths for nutrition, erosion and weeds
- Assess the topography, taking into account access, maintenance, cultivation and weeds
- Map out location of services, such as water pipes, powerlines, cables, and easements
- Map out paddock design – note the fences, gates, roads and tracks
- Check location of buildings, stockyards and other assets that might affect cultivation
- Note the location of creeks, springs and dams that might be impacted by the planting
- Potential for pests and diseases – what are your control options?
- Layout of the paddock/space of planting – size, shape and row spacing



Financial & business checklist

Here's a checklist of financial and business considerations:

- Plan out initial costs, ongoing costs and returns
- Calculate resources needed to establish and manage the trees over a long period (10-45 years depending on species)
- Taxation considerations – speak to your accountant
- Enquire about whether you should register for a Forestry Right on the title. This may be necessary to secure your interest in the forest if you later sell the land
- Do you need planning approval?
- Check if you should apply for a Private Timber Reserve for the proposed plantation
- Consult the Forest Practises Code [Go here](#)

... The government states that working with farmers to create a long-term 'wood bank' by integrating trees on farms will be an economic win-win for all parties if the trees are planted in the right quantities and in the right location.

Size matters

When deciding the size of your plantation, take into account the existing and planned resources you are willing to commit to make it a success.

SELF-MANAGED PLANTATION

A single person could manage about 2 ha a year, especially where trees can be pruned up to 6 metres. Factor in the time and labour required to establish and maintain the trees and how this will work with your day-to-day running of the farm. Consider planting a few hectares per year over a number of years to ensure a regular work program and consistent return and income.

SMALL PLANTATIONS

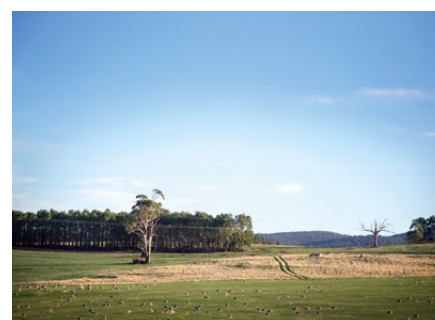
If you choose to grow a small plantation of exotic timber species, establish a marketing plan. Exotic timber species can bring in a great return if you know the potential market of the species you are planting to ensure you get the return on investment.

SMALLER PLANTATIONS

You can organise to harvest and transport the timber from your small plantation to large commercial processors. You can also try to sell to a smaller processor. The portable sawmill technology is improving rapidly, so it's possible to add value to your timber before going to market. Your plantation might also be useful for products on the farm.

LARGE PLANTATIONS

Plantations or native forests need to be at least 20 ha and have good access to keep harvesting and transport costs down. Best commercial returns occur where the trees are well managed and include species that are commonly processed in Tasmania. Consider entering a Joint Venture or Lease with a large processor or forest management company. This will help with time, costs and resources to achieve these requirements. Keep in mind when negotiating that these agreements will be in place for at least 20 years, so they could also benefit and impact the next generation.





Location, location

The location of the forest on your farm is important for weed management, harvesting and transport operations. When planning, take into account:

EXISTING ROADS

- Is there good access?
- Do all-weather roads need to be constructed?
- Can log trucks access the plantation at harvest time?

WATER QUALITY

Water supply and quality. How will your plantation effect the water flow on the farm? Forests usually improve water quality.

On Willowbend farm at Cygnet the CSIRO found that trees reduced E.coli contamination and decreased major turbidity

**Source: PFT Case Study 1, July 2016.*

LAYOUT OF THE LAND

If you plan to use a steep slope for your plantation, check the technology available to help at harvest time.

Private Forests Tasmania

Fact Sheet 2

Start your plan

Hobart
30 Patrick Street
Hobart 7000

Launceston
State Government Offices
171 Westbury Road
Prospect 7250
PO Box 180
Kings Meadows 7249

Burnie
State Growth Offices
The Harris Building
Level 2, 49 Cattley Street
PO Box 68
Burnie 7320



Disclaimer:

This information has been prepared by Private Forests Tasmania (PFT). Every reasonable endeavour has been used to ensure that the material was accurate at the time of publication. No representation or warranty is made by PFT for the accuracy, completeness, or relevance of such information to the user's purpose. You agree and accept that any use of the information is entirely at your own risk. PFT, the Crown, its officers, employees and agents do not accept any liability whatsoever arising (including, without limitation, negligence) for any loss in connection with or arising out of any use of or reliance upon the information. Anyone considering any investment project should seek independent professional advice on the particular matter before making a decision. This document is protected by the provisions of the Copyright Act 1968 (Cw'lth).

Next steps



Arrange an appointment

Arrange an appointment with a private forester to talk about what you want to achieve from growing trees on your property. See if a consultant can come and assess your land and find out what is possible

contact@treealliance.com.au



Call the helpline

Call the helpline with any questions

Tel: 1300 661 009



Join the online community

Join our private Facebook group, the Growing the Future Online Community. Find out what other farmers are doing, chat to an expert, ask questions and share ideas.

<https://www.facebook.com/groups/596397397623294>

